



FES BMS LCD Display

Version 1.0



LZ design d.o.o., • Brod 3D, 1370 Logatec, Slovenia • tel +386 59 948 898
info@lzdesign.si • www.front-electric-sustainer.com

Table of Content

1. Important notices 3
 1.1 Limited Warranty 3
2. Packing list 4
3. General..... 4
4. System description 5
5. Connections 8
6. Repair and service..... 8
7. Revision history..... 8

1. Important notices

Please read this manual thoroughly. It contains important information about your FES BMS LCD Display unit.

Information in this document is subject to change without notice. LZ design reserves the right to change or improve their products and to make changes in the content of this material without obligation to notify any person or organization of such changes or improvements.

1.1 Limited Warranty

This electronic device is warranted to be free from defects in materials or workmanship for one year from the date of purchase. Within this period, LZ design will, at its sole option, repair or replace any components that fail in normal use. Such repairs or replacement will be made at no charge to the customer for parts and labor, the customer shall be responsible for any transportation cost. This warranty does not cover failures due to abuse, misuse, accident, or unauthorized alterations or repairs.

THE WARRANTIES AND REMEDIES CONTAINED HEREIN ARE EXCLUSIVE AND IN LIEU OF ALL OTHER WARRANTIES EXPRESSED OR IMPLIED OR STATUTORY, INCLUDING ANY LIABILITY ARISING UNDER ANY WARRANTY OF MERCHANTABILITY OR FITNESS FOR A PARTICULAR PURPOSE, STATUTORY OR OTHERWISE. THIS WARRANTY GIVES YOU SPECIFIC LEGAL RIGHTS, WHICH MAY VARY FROM STATE TO STATE.

IN NO EVENT SHALL LZ DESIGN BE LIABLE FOR ANY INCIDENTAL, SPECIAL, INDIRECT OR CONSEQUENTIAL DAMAGES, WHETHER RESULTING FROM THE USE, MISUSE, OR INABILITY TO USE THIS PRODUCT OR FROM DEFECTS IN THE PRODUCT. Some states do not allow the exclusion of incidental or consequential damages, so the above limitations may not apply to you. LZ design retains the exclusive right to repair or replace the unit or software, or to offer a full refund of the purchase price, at its sole discretion. SUCH REMEDY SHALL BE YOUR SOLE AND EXCLUSIVE REMEDY FOR ANY BREACH OF WARRANTY.

To obtain warranty service, contact your local LZ design dealer or contact LZ design directly.

2. Packing list

FES BMS LCD Display with:

-110V/220V AC to 12V DC transformer

-DSUB connector (with 15 pins suitable for FES GEN2 battery pack with internal BMS, or with 9 pins suitable for FES GEN1 battery pack with external BMS)

-round connector for communication with charger

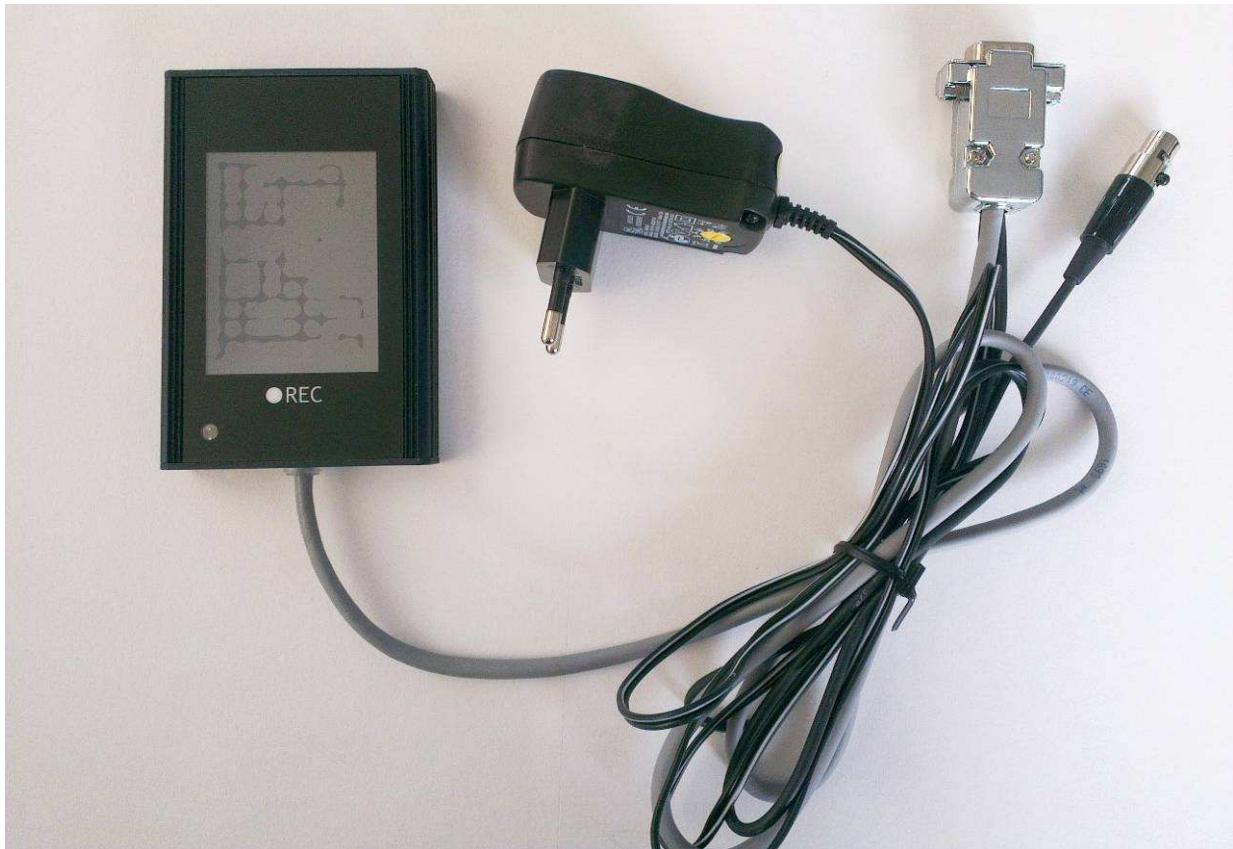


Figure 1: FES BMS LCD Display overview.

3. General

FES BMS LCD Display screen shows all the parameters of the FES battery pack. It was developed in cooperation with company REC d.o.o., as more user-friendly solution compared to standard FES BMS Control software, which require PC with Windows operation system.

User can monitor the parameters in real-time and diagnose the potential errors in the FES battery pack. LCD Display require it own power supply (10-16 V), which is usually provided by small 110/220V AC transformer.

Features:

- robust and small design in aluminum enclosure
- touch screen display
- low power consumption
- portrait/landscape view
- automatic/manual backlight setting
- hibernate timer

4. System description

Main parameters overview:

Window	Description
SOC	State of charge of the battery pack
BAT. VOLT [V]	Battery pack total voltage
CURRENT [A]	Battery pack current (when charging)
TIME TO FULL/EMPTY	Approximate time till the battery pack is full during charging
CMAX [V]	Maximum cell's voltage
CMIN [V]	Minimal cell's voltage
TEMP [°C]	Maximal temperature
POWER [kW]	Battery pack charging power
SOH [%]	State of health

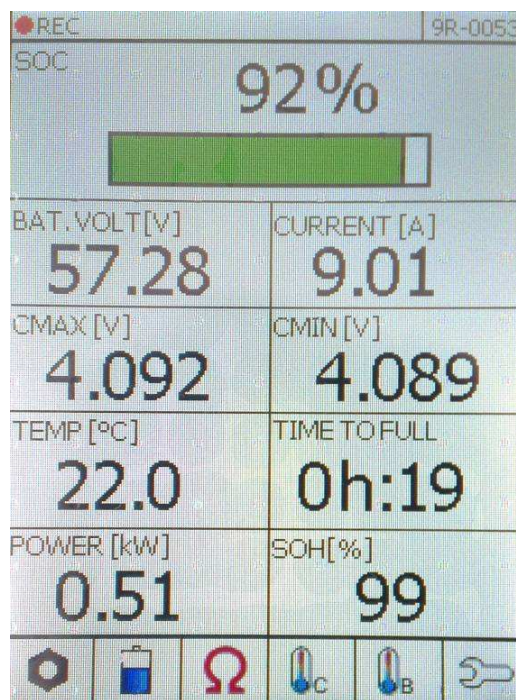


Figure 2: First tab - main parameters.

Description of additional tabs in the lowest line:

Icon	Tab	Description
	Main parameters	First tab shows main parameters of the FES battery pack.
	Cell's voltage	Second tab shows each cell's voltage.
	Cell's impedance	Third tab shows each cell's DC impedance.
	Cell's temperature	Forth tab shows battery pack temperature.
	BMS temperature	Fifth tab shows BMS temperature.
	LCD –TFT settings	Sixth tab serves for LCD display settings.

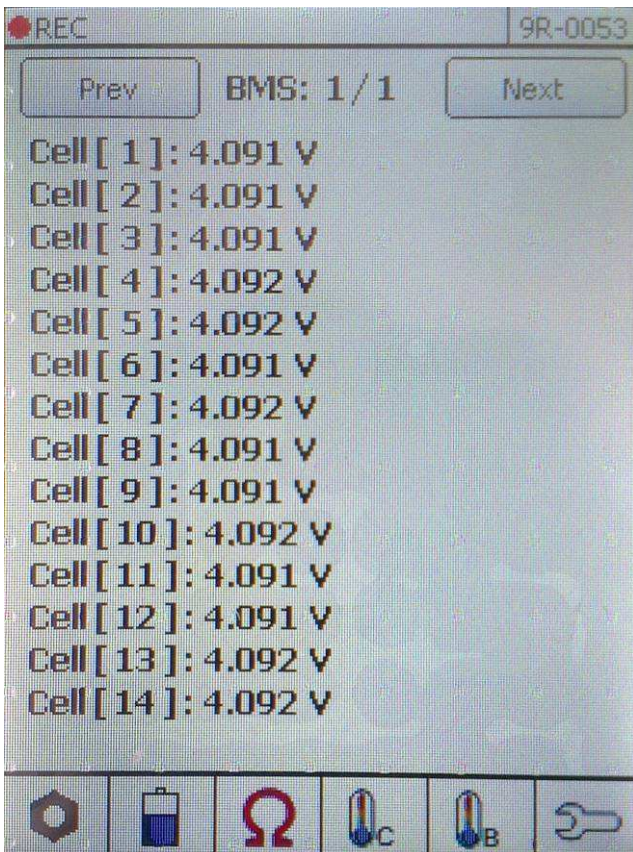


Figure 3: Second tab – cell’s voltages.

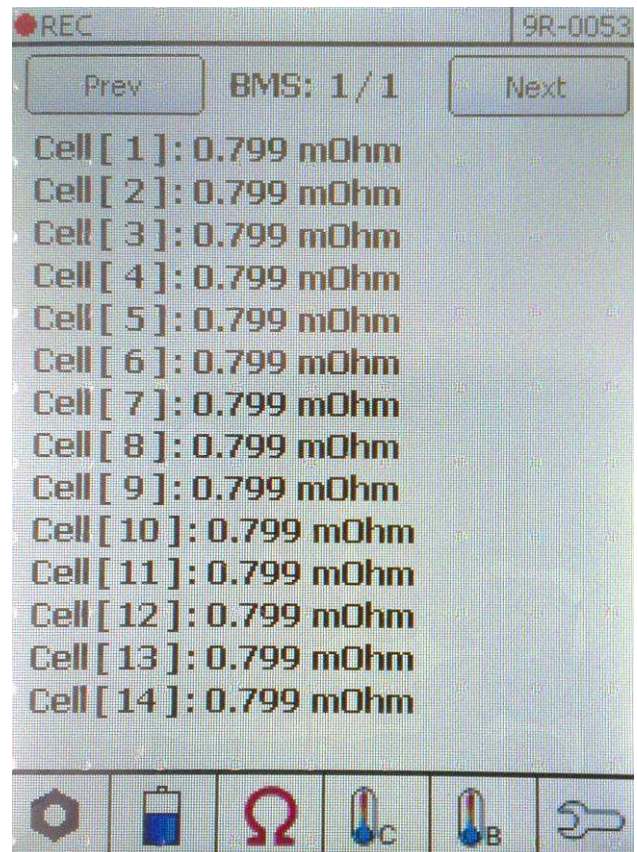


Figure 4: Third tab – cell’s DC impedance.

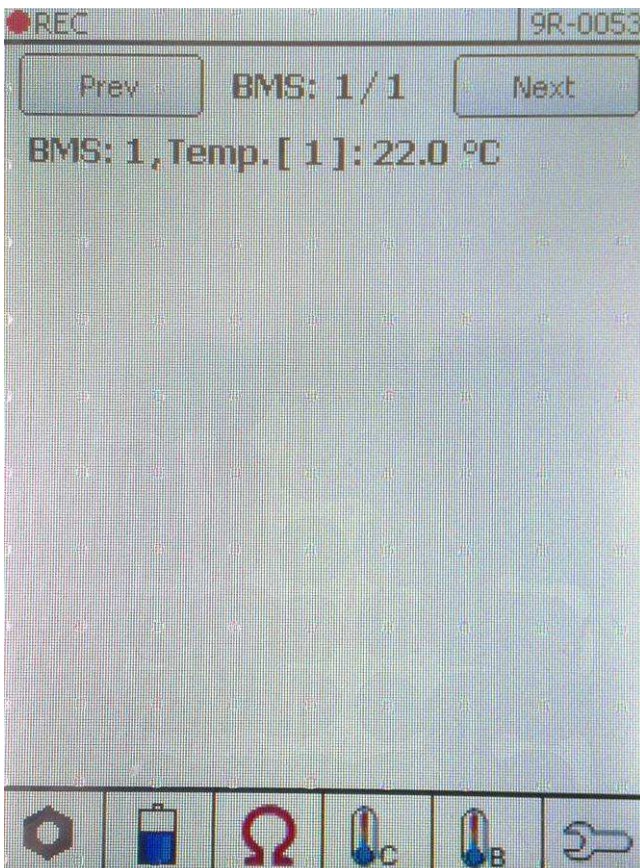


Figure 5: Fourth tab – cell’s temperatures.

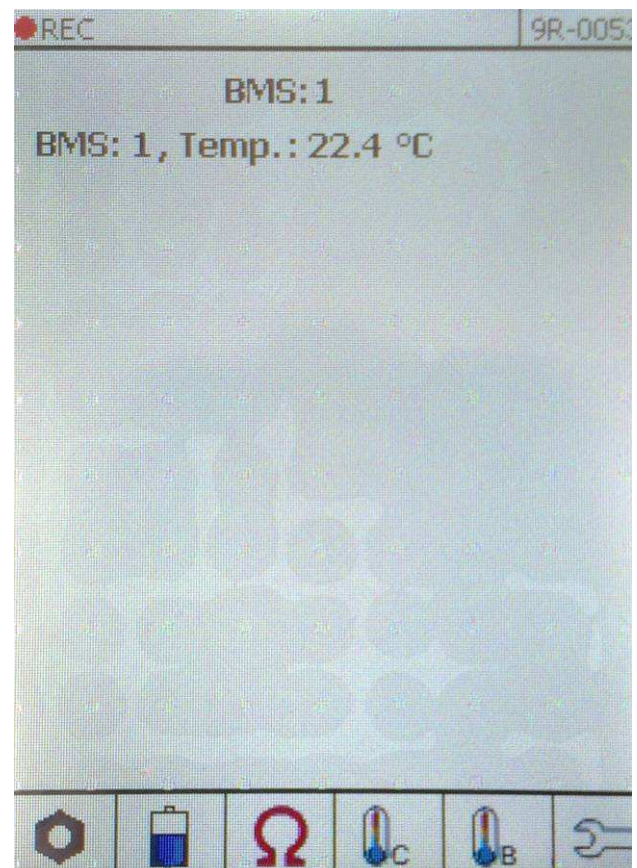


Figure 6: Fifth tab – BMS temperatures.

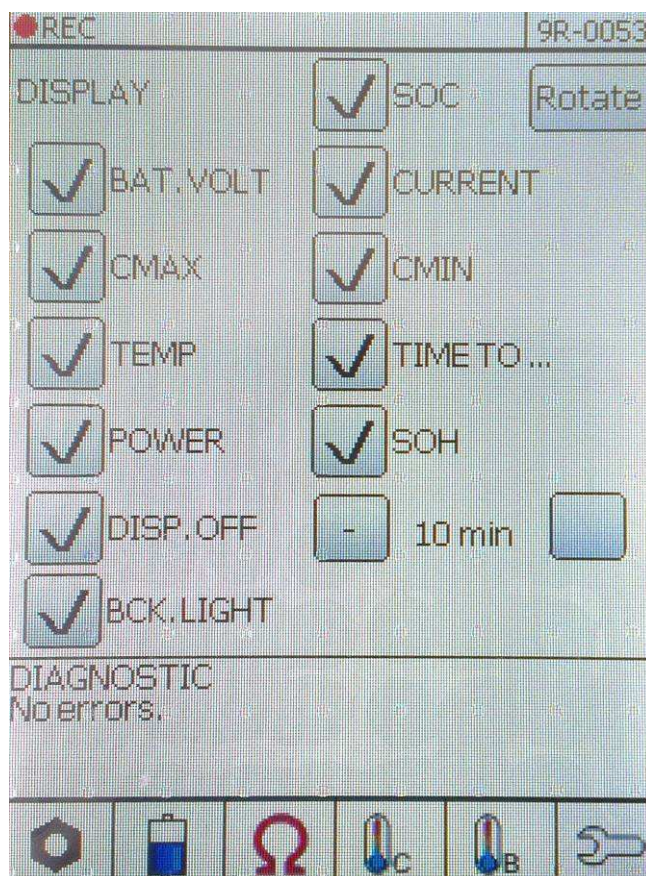


Figure 7: FES BMS LCD settings.

LCD display settings buttons description:

Icon	Description
SOC	Show/Hide SOC from the main parameters' tab
BAT. VOLT	Show/Hide battery pack voltage from the main parameters' tab
CURRENT	Show/Hide battery pack current from the main parameters' tab
TIME TO...	Show/Hide Time to full/empty from the main parameters' tab
CMAX	Show/Hide CMAX from the main parameters' tab
CMIN	Show/Hide CMIN from the main parameters' tab
TEMP	Show/Hide highest temperature from the main parameters' tab
POWER	Show/Hide charging power from the main parameters' tab
SOH	Show/Hide SOH from the main parameters' tab
DISP. OFF	Selects or turns-off backlight sleep mode timer.
BCK. LIGHT	Selects automatic or manual backlight settings.
Rotate	Rotates screen Portrait/Landscape.
DIAGNOSTIC	Describes the error in the system.

5. Connection

1. Connect RS485 communication connector to BMS data connector
2. Plug in small transformer to wall outlet
3. Switch on BMS and wait until initial check is finished
4. Initial display with data becomes visible

Charging:

5. If charging is required, connect round connector to charger
6. Plug in charger supply cable to 220V/50Hz AC wall outlet.

6. Repair and service

In case of troubles please contact LZ design d.o.o.

7. Revision history

May 2014	Initial release of the manual, Version 1.0